

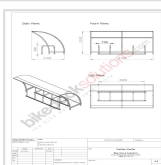


## Parisian Cycle Shelter

Excl. Tax: €1,417.50

Incl. Tax: €1,701.00

IN STOCK



### Product Options

#### Size Options (Any One)

10 Bike Space + €0.00

20 Bike Space + €1,134.00

#### Choose Finish (Any One)

Galvanised + €250.00

Galvanised and Painted RAL Colour + €300.00

Powder coated colour + €0.00

#### RAL Colour Code

1023 Traffic Yellow + €0.00

3000 Flame Red + €0.00

5002 Ultramarine Blue + €0.00

5017 Traffic Blue + €0.00

6005 Moss Green + €0.00

7015 Slate Grey + €0.00

9005 Jet Black + €0.00

9010 Pure White + €0.00

Custom Colour + €200.00  
6024 Traffic Green + €0.00

Custom Colour + €0.00

End Panels Option (Any One)

No Polycarbonate end panels + €0.00  
Polycarbonate end panels + €270.00

## Details

---

This Cycle Shelter available in a galvanised or powder coated RAL code colour finish with galvanised bike stands. Anti-climb roof and end frames with 3mm polycarbonate panels. Specification No climb end frames with anti-vandal PET panels on roof and optional on the sides No crawl under perimeter Hot dipped galvanised or polyester powder coated to BS EN ISO 1461:1999 standard finish Single units can be placed alongside or opposite each other, to form larger cycle storage areas. Cycle Shelter comes with adjustable overground fixing feet Includes assembly bolts, expanding foundation bolts for concrete plinth and arrangement drawing for assembly This bike shelter can help contribute towards gaining ENE8 Cycle storage credits when used in the appropriate situation, under the Code for Sustainable Homes Size Options

10 bike space PAR1 - H: 2100mm L: 4100mm W: 2100mm

20 bike space PAR2 - H: 2100mm L: 8100mm W: 2100mm

30 bike space PAR3 - H: 2100mm L: 12100mm W: 2100mm

40 bike space PAR4 - H: 2100mm L: 16100mm W: 2100mm

50 bike space PAR5 - H: 2100mm L: 20100mm W: 2100mm

Typical Delivery time: 2 to 3 weeks